



Fruition Properties



231 Watford Road  
London  
HA1 3TU

Utilities Report

ELKOMS  
Consulting Ltd.



352 Fulham Road  
London  
SW10 9UH

Tel: 020 8123 8152  
bratantic@  
elkomsconsulting.com

rev 01  
Sep 2021

## UTILITIES

Fruition Properties, 231 Watford Road, London, HA1 3TU

### UTILITY REPORT

#### Audit sheet

Rev.	Date	Description	Prepared	Verified
01	16/09/2021	Draft	NI	BMA

This report is provided for the stated purposes and for the sole use of the named Client. It will be confidential to the Client and the client's professional advisers. Elkoms Consulting Ltd accepts responsibility to the Client alone that the report has been prepared with the skill, care and diligence of a competent engineer, but accepts no responsibility whatsoever to any parties other than the Client. Any such parties rely upon the report at their own risk. Neither the whole nor any part of the report nor reference to it may be included in any published document, circular or statement nor published in any way without Elkoms Consulting Ltd's written approval of the form and content in which it may appear.

### CONTENTS

1.0	EXECUTIVE SUMMARY	5
2.0	DEVELOPMENT	6
3.0	SCOPE	6
4.0	EXISTING INFRASTRUCTURE & NEW SUPPLIES	7
4.1	ELECTRICITY	8
4.2	GAS SUPPLY	8
4.3	WATER SUPPLY	9
4.4	TELECOMS	10
4.5	SEWER	10
5.0	APPENDIX 1 – Existing Utilities Survey	11
6.0	APPENDIX 2 – UKPN Proposal New Connection	12

### 1.0 EXECUTIVE SUMMARY

This report provides a summary assessment of the existing utility infrastructure within and in proximity to the site boundary of the proposed 231 Watford Road Development in London, HA1 3TU.

Consultation has taken place with each of the Utility Companies owning and operating the infrastructure services networks within and surrounding the site of the proposed development to determine the extent of works required to retain and/or adapt the networks to accommodate the requirements of the development.

The consultation process is ongoing, and the following key elements have been established to date:

- The current building is served with gas, water, fire main, drainage, electricity and telecom.
  - Reinforcement of the existing utility supplies network is not currently required to accommodate the proposed development
  - The existing electrical supply is of the sufficient capacity to serve a proposed development. The connection proposal from the existing substation located on site has been obtained from UKPN (Ref. No. Quotation - 8500176755 - 231 Watford Road, Harrow, HA1 3TU).
  - The existing gas supply will be decommissioned and capped off.
  - At the time of reporting, Affinity Water have received instruction to assess the capacity requirements for the site and provide a budget estimate. We are currently waiting for a response.
  - Due to the locality of Affinity Water's existing apparatus to the site and the expected position of the plant room, it is anticipated that a point of connection for the site will be established from the mains supply on Watford Road where the existing connection is located. The potable water storage is proposed on site which will keep the water demand to the minimal required level. Therefore the Affinity Water network modelling is not required
  - Future connections will be provided to the development from the fibre optic operators. The utility suppliers have not been approached in this stage but connection in the future is not envisaged to be a problem as number of the telecoms have existing network in the vicinity of the site.
- Existing sewer that are crossing front of the site will be retained. The building shape takes into account the existing sewer run and development design has ensured that existing trunk sewer will be unaffected
  - For the further drainage foul and surface water sewer connection details refer to SUSD Report produced by others

**2.0 DEVELOPMENT**

The site is located in the London Borough of Brent, in front of the John Lyon roundabout and at the junction between Watford Road and Sudbury Court Drive. It is bound by 135 Sudbury Court to the south, Formula One Autocentres to the north and no 15 and 17 Amery Road to the west.

The closest tube and overground station is South Kenton and the site has a PTAL rating of 1b indicating a low level of access to public transport. A few hundred meters north is Northwick Park.

The site comprises an existing restaurant, Mumbai Junction, and its car parking facilities.



The redevelopment proposals are for the demolition of the existing structures to be replaced by a residential development over ground and 4 upper floors with associated parking, cycling and bin storage.

Overall, the proposed scheme will deliver some 43 new flats.

**3.0 SCOPE**

Elkoms Consulting Building Services has been commissioned by Fruition Properties to undertake a study to assess the existing utility infrastructure within and in proximity to the site boundary of the proposed 231 Watford Road development.

The statutory undertakers have been contacted to confirm the location of their assets in relation to the application site. This base information has been, and will continue to be, augmented by a series of intrusive and non-intrusive surveys completed in key areas to validate record information obtained during the course of developing.

The report reviews the existing utility networks to understand the extent of network modifications generated by the development proposals and assesses the ability of the existing electricity, gas, telecommunications and potable water networks to support proposed building.

This report provides a summary of the existing utility infrastructure within the application site (and surrounding area) and outlines the proposed utility strategy for the proposed development.

This report does not cover the foul and surface water sewer systems (refer Structure Flood Risk Assessment document) or the Energy Strategy (refer ECL and Sustainability Statement) which are covered by separate documents.

**4.0 EXISTING INFRASTRUCTURE & NEW SUPPLIES**

ECL have obtained utility record information for statutory undertaker apparatus within the application site and the surrounding area. The following companies own and operate the existing utility networks:

Type	Utility	Asset in the Area	Comments
Electricity	UK Power Networks	Yes (1 substations)	Substation to be retained. Protection of the Asset during the construction is required but assumed no issue as the substation is remote from the new development
Electricity	UK Power Networks	Power Cables	Power cables running outside of the site boundary
Gas	Cadent (NG)	Yes	Not Affected
Mobile Telecom	Vodafone	Mobile Phone Masts	Mobile Phone mast shall be reinstated after new building is constructed
Telecom	BT	Yes	Not Affected
Telecom	Last Mile	No	
Telecom	Verizon	No	
Telecom	Sky	No	
Telecom	Virgin Media	Yes	Not Affected
Telecom	MBLN	Yes	Not Affected
Telecom	Vodafone	No	
Telecom	GTC	No	
Energy	Engie	No	
Water	Affinity Water	Yes	Not Affected
Sewers	Affinity Water	Yes	The sewer is crossing a site and building shape is adjusted to clear sewer influence zone. Refer to SUD Report for further details
Traffic	Transport for London	Yes	Protection of the Traffic

The record drawings of the existing services around the site are included in the Appendix I

4.1 ELECTRICITY

The UKPN has one existing substations on site which will be retained as indicated on the figure 1 below.

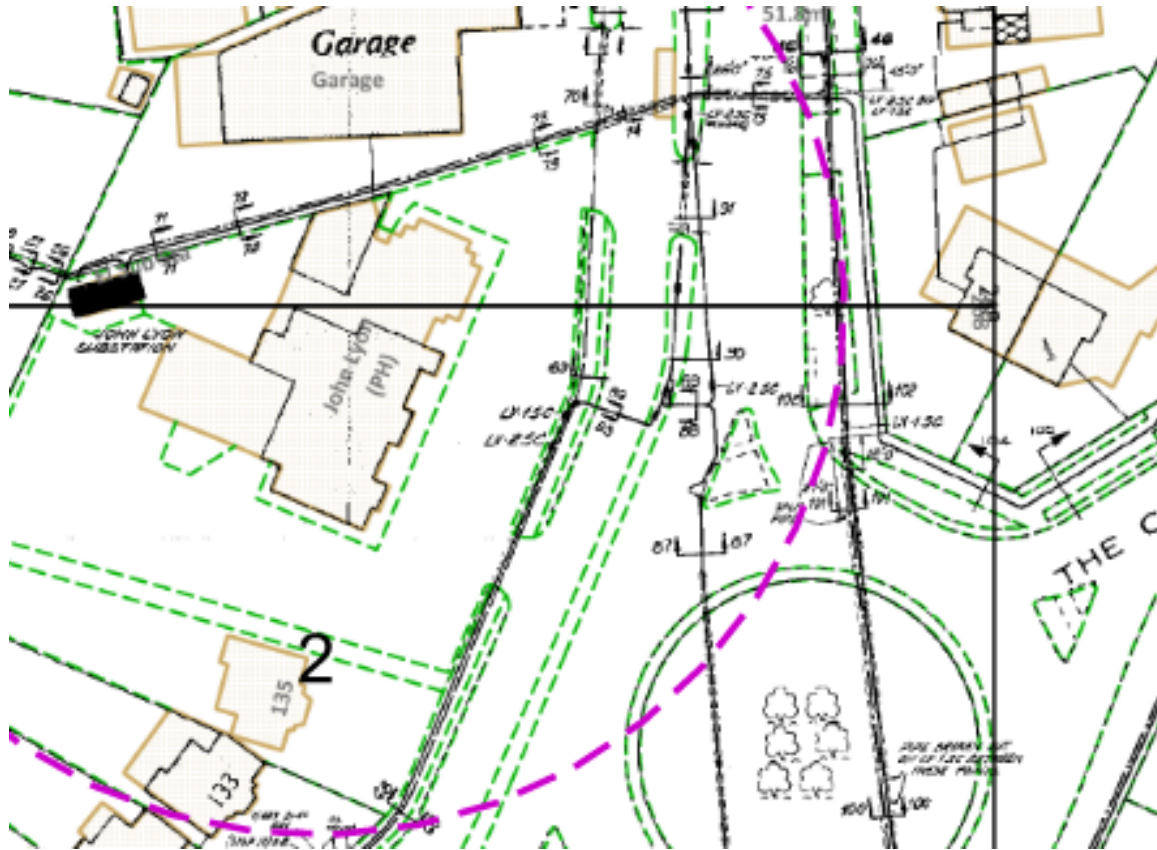


Figure 1: Electricity Network

The supply to the new building will be provided from the existing substation via new 500A fuses

4.2 GAS SUPPLY

Cadent (Formerly National Grid) has INos LP main connection. The existing 63" connection will be disconnected and capped off.

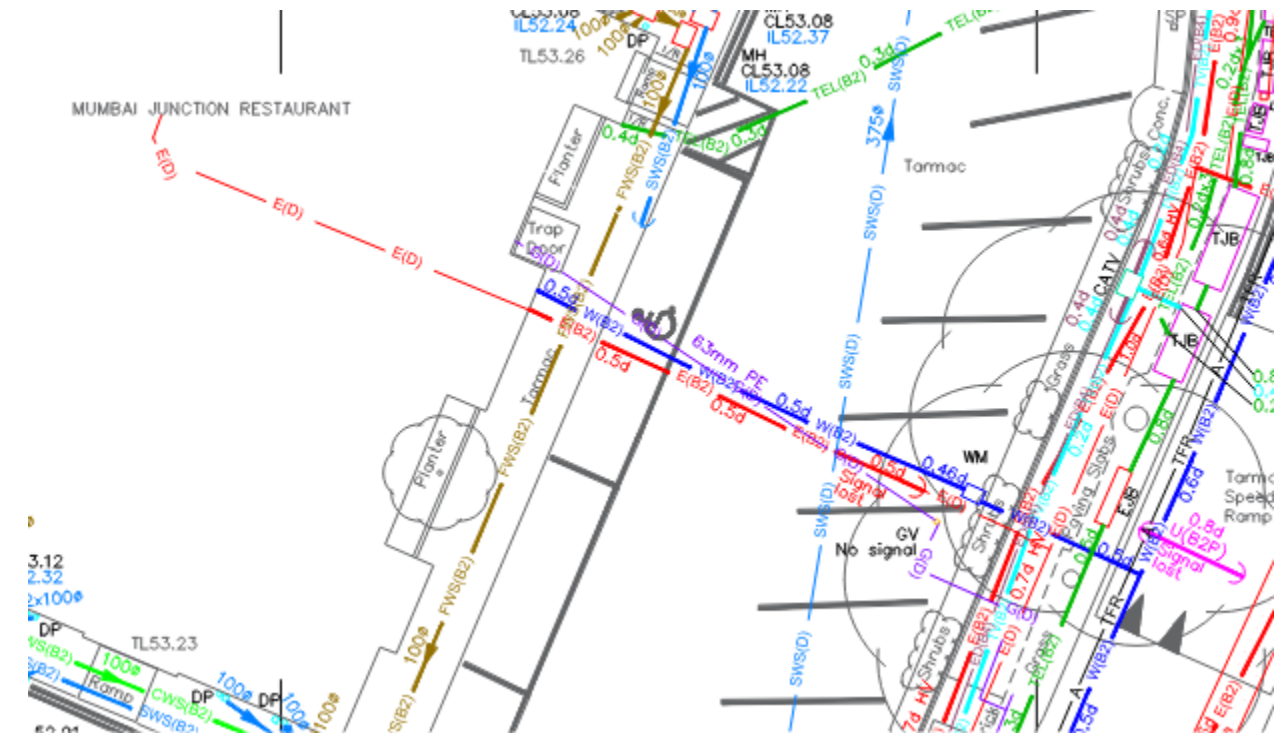


Figure 2: Existing Gas Network

### 4.3 WATER SUPPLY

The Affinity Water has a water mains within Watford Road. Water main will not be affected by construction of the proposed development.

The existing potable water connection and fire main connection will be re used for the new development

connection is located. The potable water storage is proposed on site which will keep the water demand to the minimal required level. Therefore the Affinity Water network modelling is not required



Figure 3: Existing Water Mains

- At the time of reporting, Affinity Water have received instruction to assess the capacity requirements for the site and provide a budget estimate. We are currently waiting for a response.
- Due to the locality of Affinity Water's existing apparatus to the site and the expected position of the plant room, it is anticipated that a point of connection for the site will be established from the mains supply on Watford Road where the existing







5.0 APPENDIX 1 – Existing Utilities Survey



## UTILITIES

Fruition Properties, 231 Watford Road, London, HA1 3TU

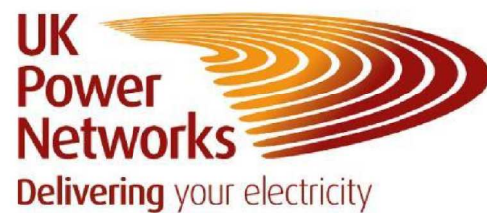
### UTILITY REPORT

---



Elkoms Consulting  
Building Services Engineers

#### 6.0 APPENDIX 2 – UKPN Proposal New Connection



**Registered Office**  
Newington House  
237 Southwark Bridge Road  
London SE1 6NP

**Company:**  
UK Power Networks  
(Operations) Limited

Registered in England and Wales No: 3870728

Mr Ivan Marcinek  
Elkoms Consulting  
352 Fulham Road  
London  
SW10 9UH

Date: 03 August 2021

Our Ref: 8500176755 / 3500114201

Customer Ref: 8500176755 / 3500114201

Dear Mr Ivan Marcinek

### Site Address: 231 Watford Road, Harrow, HA1 3TU

Thank you for your recent enquiry regarding the above site. I am pleased to be able to provide you with a Quote to carry out the work requested. I am writing to you on behalf of Eastern Power Networks plc the licensed distributor of electricity for the above address trading as and referred to in this Quote as "UK Power Networks".

The Works will enable the provision of an import capacity of 342 kVA and a maximum export capacity of 0 kVA. UK Power Networks will provide this via a new 3-phase 500A supply that will be distributed as a BNO (building network operator) arrangement.

UK Power Networks would like to carry out all of the requested work for you. However, there are other companies who can do some or all of the work for you; these are Independent Connection Providers (ICPs). You can approach NERS accredited ICPs directly, or you can approach an Independent Distribution Network Operator (IDNO) to request this work and they will arrange for an ICP to carry out the Contestable Works. To find out more about which ICPs work in our area and what work they can undertake please [click here](#).

To give you as much choice as possible we are able to offer you **the following options** for getting your work done:

How much is it going to cost?		Price excluding VAT	Price including VAT
<b>A</b>	UK Power Networks carries out all of the requested 'contestable' and 'non-contestable' works required for your connection	<b>£29,833.98</b>	<b>£29,833.98</b>
<b>B</b>	UK Power Networks carries out all the 'non-contestable' work and the 'contestable closing joint'. The ICP carries out all other requested 'contestable' work	<b>£15,838.55</b>	<b>£15,838.55</b>
<b>C</b>	UK Power Networks carries out the 'non-contestable' works only. The ICP carries out all of the works classified as 'contestable'	<b>£10,464.61</b>	<b>£10,464.61</b>

A short guide is available to help you understand the three different Prices (options A, B and C). To see this guide please [click here](#).

#### Provisional Price

I would like to draw to your attention to the provisional nature of the Quote. At the date of issue, either the detailed design and/or the procurement have not been completed, or the proposed design is dependent on securing consents with third parties that have not yet been obtained. We will notify you in writing if the location of the Electric Lines, the electrical plant, the design, the completion date or the Price needs to be adjusted once the detailed design and the

procurement process is complete.

#### Terms and Conditions

The Quote is subject to version 7 (September 2016) of our **Terms and Conditions For Connection and Diversions Works** (the "Terms and Conditions") which you can view [here](#). Alternatively, please let me know if you would like me to send you a copy in the post. These create legally binding obligations so it is important that you take the time to read and understand them. They also contain definitions of terms used in this document and in the linked pages on our website that you may find helpful.

#### Special Conditions

This offer is subject to the following:-

- Customer to complete their site responsibilities as outlined on the 'Proposal plan'.
- Customer to have all supplier settlement meters.
- This quotation is subject to 3rd party legal consents being obtained for works on 3rd party land, and no works can commence until those have been obtained. No costs included in quote for legal fees, and if required those will be chargeable to the customer under separate cover as a variation.
- No costs have been included within this quotation for any out of normal hours working provisions, and if required those will be chargeable to the customer under separate cover as a variation.
- Some costs have been included for LV containment works inside the substation, however any additional costs that arise with regards to this will be chargeable to the customer under separate cover as a variation.
- There is an existing substation in close proximity to this development. 'EDS 07-3101 - Pre-design requirements for secondary substations' document states that secondary substations should be:
  - Minimum 4m from the nearest building to mitigate fire risk.
  - Minimum 10m from residential properties, where possible, to mitigate potential noise nuisance.
 Customer will need to comply with this document ('EDS 07-3101'), and if they cannot maintain these minimum distances then should consider mitigation measures to allow the reduction of these distances.
- This quotation does not include for any disconnection / diversionary works, and the customer will need to apply for those separately if / when required.

#### When can you expect your electricity connection?

Once you have accepted this Quote we will call you to discuss a programme of Works. Subject to the Terms and Conditions the Works referred to in this Quote will be completed on or before 03 November 2022.

We will try to meet your requested dates wherever possible but the completion date will be dependent on:

- The date that the Quote is accepted;
- How much of the work you wish UK Power Networks to complete;
- Any further discussions we may have with you regarding the programming of the works; and
- The completion of work by other people or companies that must be done before we can complete our work.

#### Interactivity

We have not received a request from any other customer for connections to the same part of our Distribution System, but to find out what happens if they do, please [click here](#).

#### Variation of Works

If there is a variation to the scope of work where the Price is expected to increase, then an additional payment will be due. Your on-site representative, who should have your authorisation to agree variation to the Works, will be asked to sign a variation form or send an email agreeing to this variation. If this is not received, then this could result in a delay to the Works and further charges due to remobilising of resources to complete the Works.

Please note that UK Power Networks' Price as identified in this offer will remain valid for 12 months from the date of acceptance of the offer. As stated in section 6.2.3 of our Terms and Conditions, any Works delivered after this date may be subject to a variation in Price reflecting any contract rate cost increase that will be incurred by UK Power Networks to deliver the Works.

#### Post quote call

I will contact you within the next few days to discuss your quote, to ensure you understand the work we will do for the quoted price, your responsibilities, any dependencies and the likely timescales for the work. UK Power Networks are always looking to improve our service offering and as such, the post quote call may be recorded for training purposes. We will not share the recorded call with anyone outside of our connections business and it will be deleted as soon as we have completed the training review. However, if you do not want us to record the call please let me know at the beginning of the call.

#### What you need to do next

Before you decide to proceed it is really important that you take note of our **Terms and Conditions**, any **special conditions** detailed above and the details in **Your Information Pack** which includes information contained within the hyperlinked text, all of which constitute your **Quote**.

If you would like to accept this Quote you will need to ensure that the requested payment is in our bank account in full and cleared funds and that we have received your signed Acceptance Form from section 5 below by 5pm on 01 November 2021.

If you would like UK Power Networks to carry out all of the Works please accept option A. If you would prefer to use an ICP to carry out the Contestable Work (or an IDNO to arrange for an ICP to carry out the Contestable Works), you can pass this Quote to them and they can accept either option B or option C. Alternatively, you can accept option B or option C yourself, but you will need to ensure that your appointed ICP or IDNO understands what they must do, and what UK Power Networks will do for these options. **You can only accept one option.**

#### Do you need more information?

If you have any questions about this Quote or need more information, please do not hesitate to contact me.

Yours sincerely



Oz Ali

Mobile: 07812 262 274  
Email: [oz.ali@ukpowernetworks.co.uk](mailto:oz.ali@ukpowernetworks.co.uk)

Please support our safety campaign and join the growing number of companies signing up to our [Pledge](#)



To download your free safety leaflets and resources visit [UK Power Networks - Safety Page](#)

## Your Information Pack

The following pack provides all of the information you should need to successfully complete your electrical connection for the work you have been quoted. Please pay particular attention to the information that is specific to your project.

Do not hesitate to contact me should you require any further support.

- Section **1** The Scope of Works
- Section **2** Cost Breakdown
- Section **3** Your Responsibilities
- Section **4** Information To Help You As You Plan For Your Work
- Section **5** Acceptance Form To Proceed With The Works

## Section 1 Scope of Works

Please read the details in this section in conjunction with the customer proposal plan (referred to in the Drawing Schedule in Section 4).

<b>A</b>	<p>UK Power Networks to carry out crossing jointing works to free up an LV Way out of the substation for the customers' new supply. UK Power Networks to install a new 3-phase 500A supply that will be distributed as a BNO (building network operator) arrangement.</p> <p>UK Power Networks carries out all the Contestable and Non-Contestable Works.</p>
<b>B</b>	<p>UK Power Networks will carry out the non-contestable &amp; contestable final closing joint elements of work as outlined in the cost breakdown below.</p> <p>You will need to arrange for the completion of the remaining Contestable Works by an accredited ICP.</p> <p>If option B is accepted, your appointed ICP will be responsible for the production of all detailed constructible designs, which must be submitted to UK Power Networks for review and approved prior to the commencement of any Contestable Works. No charge will be made by UK Power Networks for this service.</p>
<b>C</b>	<p>UK Power Networks will carry out the non-contestable elements of work as outlined in the cost breakdown below.</p> <p>You will need to arrange for the completion of the Contestable Works by an accredited ICP.</p> <p>If option C is accepted, your appointed ICP will be responsible for the production of all detailed constructible designs, which must be submitted to UK Power Networks for review and approved prior to the commencement of any Contestable Works. No charge will be made by UK Power Networks for this service.</p>

### Your Connections

The table below provides a summary of the technical characteristics and the connection types you have requested:

The below are all fed from one service via a BNO (Building Network Operator) arrangement:

Type of Property	No. of MPANs	Metering Voltage	Phase Type	Import Capacity (kVA)	Export Capacity (kW)
Flats	45	230V	Single Phase, 50HZ	252	0
Meter Position	Service Cable	Fuse Size	Earthing	Metering	
Customer to decide	Customer to size service cables	Customer to size	PME(TN-C-S)	Whole Current	

Type of Property	No. of MPANs	Metering Voltage	Phase Type	Import Capacity (kVA)	Export Capacity (kW)

Landlords Supply	1	400V	Three Phase, 50HZ	90	0
Meter Position	Service Cable	Fuse Size	Earthing	Metering	
Customer to decide	Customer to size service cables	Customer to size	PME(TN-C-S)	CT Metering	

### Phases of work

Our delivery time scale of this work may be subject to our performance standards, as detailed in 'Our Connections Standards of Performance' leaflet that can be found [here](#). The standards make reference to your work in totality, including the delivery of the work that you may request to be completed in discrete parts (which are referred to as phases). This Quote covers one phase(s) of work.

## Section 2 Cost Breakdown

### Totals

Option	A	B	C
<b>Net Price (Excluding VAT)</b>	<b>£29,833.98</b>	<b>£15,838.55</b>	<b>£10,464.61</b>

### Breakdown of Costs

Description of CONTESTABLE WORK that is included in option	A	only
<b>Work involved</b>		<b>Net price (£)</b>
<b>Domestic Services</b>		
<ul style="list-style-type: none"> <li>Supply only of 300mm LV Copper waveform mains cable</li> <li>Install LV cable to duct or cable tray</li> <li>Supply &amp; terminate 3ph 600A Cut Out (not including joint)</li> <li>Connect and energise unmetered BNO boundary (over 100 Amps)</li> </ul>		£2,666.66
<b>LV Underground Mains</b>		
<ul style="list-style-type: none"> <li>Excavate &amp; Reinstate LV joint hole in a category 3 or 4 carriageway.</li> <li>Install LV 300mm waveform mains cable</li> </ul>		£11,328.77
<b>TOTAL</b>		<b>£13,995.43</b>

Description of CONTESTABLE FINAL CLOSING JOINT WORK that is included in option	A	and in option	B
<b>Work involved</b>			<b>Net price (£)</b>
<b>LV Underground Mains</b>			
<ul style="list-style-type: none"> <li>LV Mains transition straight joint of a 95-300mm cable to a 0.4-0.5in main.</li> <li>LV Mains transition branch joint of a 95-300mm cable to a 0.4-0.5in main.</li> <li>LV PILC mains pot end &amp; installation of earth pin.</li> </ul>			£5,373.94
<b>TOTAL</b>			<b>£5,373.94</b>

Description of NON-CONTESTABLE WORK that is included in option	A	and in option	B	and in option	C
<b>Work involved</b>					<b>Net price (£)</b>
<b>Domestic Services</b>					
<ul style="list-style-type: none"> <li>Excavate &amp; Reinstate inside substation enclosure</li> <li>Additional labour hours for an LV jointing team (normal working hours) to remove existing LV cable from Way</li> <li>Distribution unit termination (LV Board/Cabinet)</li> <li>Install LV 300mm Copper waveform mains cable in substation enclosure</li> </ul>					£3,817.70
<b>Miscellaneous</b>					
<ul style="list-style-type: none"> <li>High voltage shutdown</li> <li>Construct containment for open LV board inside substation enclosure</li> </ul>					£5,483.91
<b>Transactional Charges</b>					
<ul style="list-style-type: none"> <li>Assessment &amp; Design Charges</li> </ul>					£1,163.00

Other charges	TOTAL	£10,464.61

### Domestic Reverse Charge VAT Rate

You may be aware of a new VAT rate, effective from 1st March 2021 that is referred to as "Domestic Reverse Charge for Construction Services". I would like to provide you with some clarification about how your quote is affected.

Section 18 of the HMRC Guidance, which explains the Reverse charge treatment for utilities states that "Services provided by utility businesses which do not fall within the domestic reverse charge include the:

- provision of a connection to a utility network, or diversionary works to allow the relocation of the network
- development and construction of a private network to be owned by the utility and leased or sold to the customer
- installation of a boiler (and ancillary supplies)"

You can see the Government's guidance in full [here](#). So in summary, although UK Power Networks is registered under the Construction Industry Scheme (CIS), the provisions of connection services to our customers are not regarded as construction services because the work is performed on our own assets. Consequently, there will be no change to the way in which we determine how VAT is applied to this job.

**Please note that payment is required in full, in advance of the work being programmed.**



## Section 3 Your Responsibilities

This section provides information about the work that you are responsible for should you accept this Quote.

We have made all of our general information about your responsibilities available in our Knowledge Centre on our internet site at [www.ukpowernetworks.co.uk](http://www.ukpowernetworks.co.uk). Links to each of the relevant articles are in the table below.

Please let me know if you think we can improve the information we have provided.

### Job Specific Responsibilities

Subject	Link to our Knowledge Library
On-site trenches and cable route	Section 3.1 <a href="#">Click here</a>
Ducts	Section 3.2 <a href="#">Click here</a>
Services to flats	Section 3.4 <a href="#">Click here</a>
Building Network Operator responsibilities	Section 3.5 <a href="#">Click here</a>
Landlord's connections	Section 3.8 <a href="#">Click here</a>
Land rights required from others for land in their ownership occupation or control (Land rights over property outside the actual site boundary)	Section 3.23 <a href="#">Click here</a>

### Generic Responsibilities Applicable to all Quotes

Subject	Link to our Knowledge Library
Construction (Design & Management) Regulations 2015 (CDM)	Section 3.25 <a href="#">Click here</a>
Appoint an electricity supplier	Section 3.26 <a href="#">Click here</a>
Works to be undertaken by the ICP/IDNO if UK Power Networks is undertaking the non-contestable Works only	Section 3.27 <a href="#">Click here</a>
Land rights for option B or C - where UK Power Networks is undertaking the non-contestable Works only	Section 3.28 <a href="#">Click here</a>

## Section 4 Information to Help You Plan For Your Work

### Drawing Schedule

The table below shows a summary of the standard drawings that may be useful for this Quote, along with hyperlinks to the drawings that are currently applicable. Our drawings are revised periodically so the links in the table below may not work in the future if the drawings are superseded. However the latest versions of all of our standard drawings can be found [here](#). If you have not used our G81 web pages before you will be asked to register your credentials for future logins and updates.

Drawing Number	Drawing Description
8500176755 – Proposal plan	Customer proposal plan
ECS 02-0019	LV/HV/EHV cable trench details <a href="#">View</a>
EDS 08-2110.13	Service Termination Cabinet to Accommodate Cut-out for Metered Supplies Permanent or Temporary <a href="#">View</a>
EDS 08-1103	Supplies to multi-occupied buildings <a href="#">View</a>

### Job Specific Information

Subject	Link to our Knowledge Library
Supply characteristics at the Point of Supply for LV metered and un-metered customers	Section 4.2 <a href="#">Click here</a>
Earth Fault Loop Impedance (EFLI)	Section 4.4 <a href="#">Click here</a>
Cables between UK Power Networks and Customer installations up to 400A	Section 4.5 <a href="#">Click here</a>
Private generation	Section 4.6 <a href="#">Click here</a>
Interactive process	Section 4.10 <a href="#">Click here</a>

### Generic Information Applicable to all Quotes

Subject	Link to our Knowledge Library
Information common to all Quotes	Section 4.1 <a href="#">Click here</a>

If you are unhappy with our service please follow our Complaints Procedure Specific to Commercial and Industrial Projects which can be found [here](#). This document details your right to contact Ofgem for a formal determination if we have been unable to resolve the matter to your satisfaction.

## Section 5 Acceptance Form

Job Reference: 8500176755 / 3500114201

Site Address: 231 Watford Road, Harrow, HA1 3TU

Please return your completed form by post or email:

UK Power Networks (Operations) Ltd  
Connections Finance, 3<sup>rd</sup> Floor  
Energy House  
Hazelwick Avenue  
Three Bridges, Crawley, RH10 1EX

**Email:** [ConnectionAcceptance@ukpowernetworks.co.uk](mailto:ConnectionAcceptance@ukpowernetworks.co.uk)

### Please indicate which option you accept:

	Please tick one only	Price excluding VAT	Price including VAT
<b>A</b> UK Power Networks carries out all of the requested 'contestable' and 'non-contestable' works required for your connection	<input type="radio"/>	£29,833.98	£29,833.98
<b>B</b> UK Power Networks carries out all the 'non-contestable' work and the 'contestable closing joint'. The ICP carries out all other requested 'contestable' work	<input type="radio"/>	£15,838.55	£15,838.55
<b>C</b> UK Power Networks carries out the 'non-contestable' works only. The ICP carries out all of the works classified as 'contestable'	<input type="radio"/>	£10,464.61	£10,464.61

### Payment Profile

I understand that the Price, including VAT, must be paid in full to accept this Quote. I also understand that where VAT has been charged a Tax Invoice for the Price will be issued by UK Power Networks on receipt of payment.

### Please indicate your method of payment:

- Cheque Please make cheques payable to **UK Power Networks (Operations) Ltd** and put **our reference number on the back.**
- Debit/Credit Card Please call **0203 282 0610** and have your card to hand. We are sorry we cannot accept American Express/Diners Club.
- BACS/CHAPS **Account:** HSBC Bank Plc **Sort Code:** 40 05 30 **Account Number:** 02302934  
**UK Power Networks Ref. Number** 3500114201  
**(You MUST include this reference so we know which job is being paid):**

### The Invoice Address

Name / Company name:  
Contact name:  
Address:

### Your Site Contact

Name / Company name:  
Contact name:  
Address:

Telephone:  
Email:

Telephone:  
Email:

### Your Acceptance

I accept your quotation for carrying out the DNO Works in accordance with the Quote for the option I have chosen overleaf.

To accept this Quote, the signed Acceptance Form and payment in cleared funds must reach UK Power Networks by 5pm on 01 November 2021. Acceptance Forms and payments received after this date may be returned and you will need to request a new Quote.

Signed: \_\_\_\_\_

Date: \_\_\_\_\_

Print name: \_\_\_\_\_

Agent acting on behalf of: \_\_\_\_\_

Telephone: \_\_\_\_\_

Email: \_\_\_\_\_

Job Reference: 8500176755 / 3500114201

## Acceptance Form Part 2

### Land Rights

If you are appointing a Solicitor to complete any legal work associated with acquiring substation sites and easements work, please provide UK Power Networks with their details by completing the table below.

Please also provide us with the name and address of the owner of any affected land.

#### Solicitors Information

Name / Company name:

Contact name:

Address:

Telephone:

Email:

#### Land Owners Information

Name / Company name:

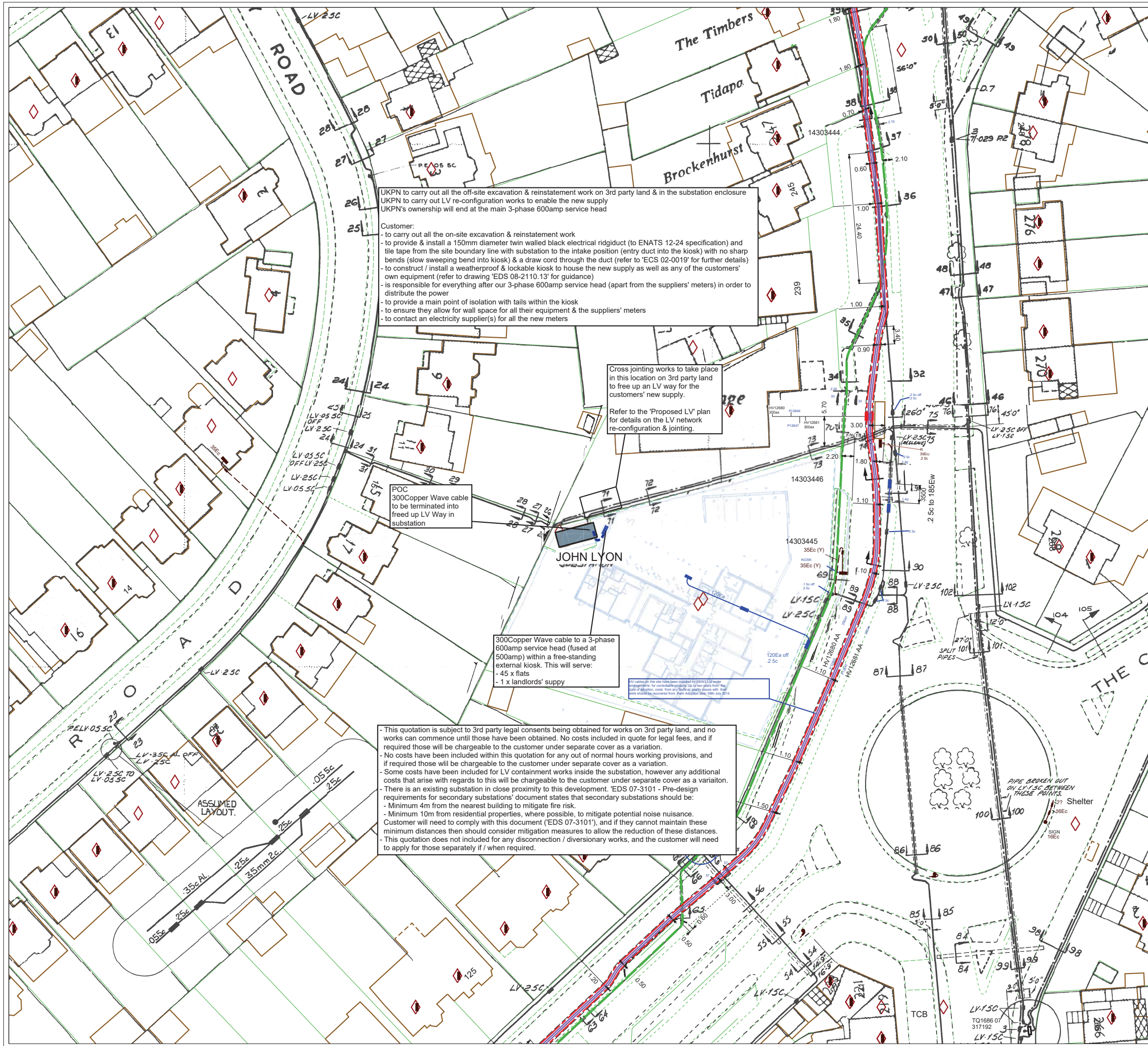
Contact name:

Address:

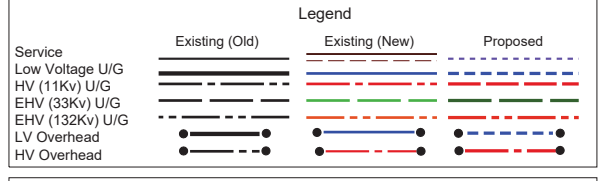
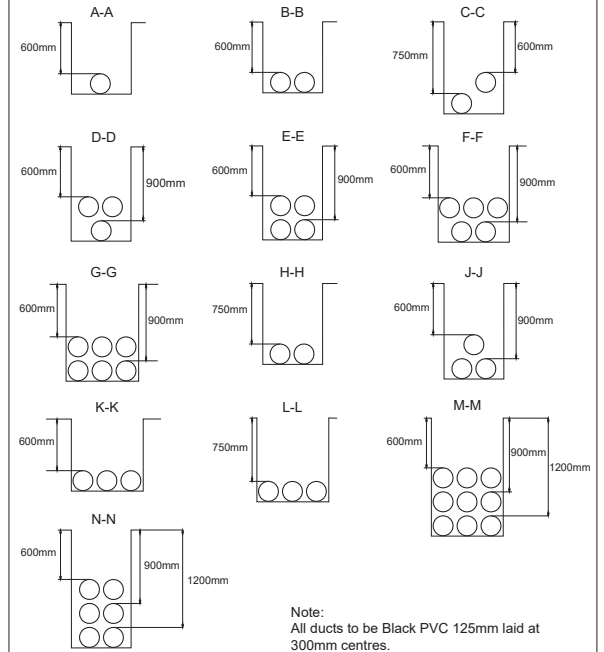
Telephone:

Email:

Job Reference: 8500176755 / 3500114201



**STANDARD CROSS SECTIONS FOR ROAD CROSSINGS**



Maps produced at 1:2500 scale are LV Geo-Schematics which show LV mains cables and overhead lines (in some cases all voltages). Prior to carrying out excavations you must refer to the 1:500 records to determine the location of all known underground plant and equipment.

Please be aware that electric lines belonging to other owners of licensed electricity distribution systems may be present and it is your responsibility to identify their location.

- The position of the apparatus shown on this drawing is believed to be correct but the original landmarks may have been altered since the apparatus was installed.
- The exact position of the apparatus should be verified - use approved cable avoidance tools prior to excavation using suitable hand tools.
- It is essential that trial holes are carefully made avoiding the use of mechanical tools or picks until the exact location of all cables have been determined.
- It must be assumed that there is a service cable into each property, lamp column and street sign, etc.
- All cables must be treated as being live unless proved otherwise by UK Power Networks.
- The information provided must be given to all people working near UK Power Networks' plant & equipment. Do not use plans more than 3 months after the issue date for excavation purposes.
- Please be aware that electric cables/lines belonging to other owners of licensed electricity distribution systems may be present and it is your responsibility to identify their location.

**PRIMARY CABLES**  
EXTRA HIGH VOLTAGE CABLES (EHV) 22,000 TO 132,000 Volts

Depth normally 750mm cover in carriageway & 600mm cover in footway.

Before digging within one metre of these cable routes  
Telephone 0800 056 5866 in order that the Company's apparatus may be located on site and any necessary protection works agreed.

**N.B. THRUST BORERS OR MOLES MUST NOT BE USED WITHIN THE VICINITY OF ANY CABLES BELONGING TO UK POWER NETWORKS WITHOUT FIRST CONTACTING THIS COMPANY.**

- ADVICE TO CONTRACTORS ON AVOIDING DANGER FROM BURIED ELECTRICITY CABLES.**
- Do have cable drawings with you on site and check them before you start the excavation.
  - Do have a cable locator tool on site and use it to help you.
  - Mark out the location of electricity cables.
  - Do not use a mechanical excavator within 0.5m of electricity cables.
  - Use spades and shovels in preference to other tools.
  - Never disturb electricity cables and joints or their protective covers.
- IF IN DOUBT - ASK! PHONE 0800 056 5866**  
**EMERGENCY - If you damage a cable or line**  
Phone 0800 780 0780 (24hrs) URGENTLY
- These basic safety precautions are explained in detail in the HSE booklet HS(G)47 - Avoiding Danger from Underground Services, a copy of which may be obtained from your supervisor or HMSO.



Proposals For : 8500176755

231 Watford Road, Harrow, HA1 3TU

Plotted On: 03/08/2021 Scale 1:500 (when plotted at A2)

Plotted By: Ozan Ali Map Centre : TQ1686NW

Reproduced by permission of Ordnance Survey on behalf of HMSO. (c) Crown copyright and database right 2021. All rights reserved. Ordnance Survey Licence number 100019626. Data has been added to the Ordnance Survey base map; all proprietary rights in such additional data are and shall remain the exclusive property of (c) Eastern Power Networks plc or London Power Networks plc each being a distribution licensee under section 6(1)(c) of the Electricity Act 1989 for the relevant distribution services area as that term is defined in such licensee's distribution licence. All rights in such data reserved.